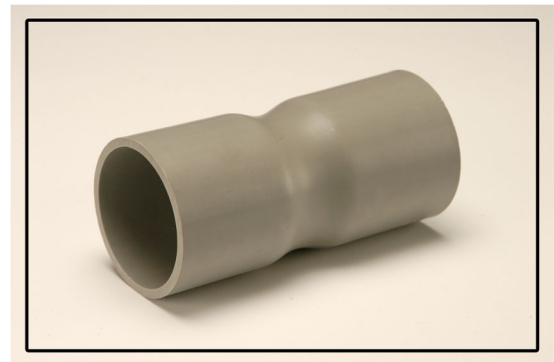
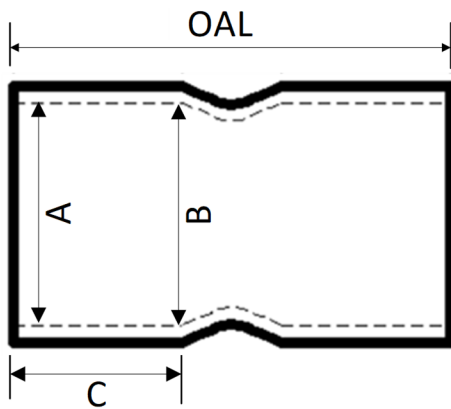




**Tacoma Facility**  
 1427 E 26th Street  
 Tacoma, WA 98421  
 (253) 272-7788

**Quincy Facility**  
 1302 NE Intermodal Way  
 Quincy, WA 98848  
 (509) 497-0350

# DOUBLE SOCKET DEEP BELL (DSDB) COUPLINGS



Pipe Size (inches)	Overall Length (avg)	Bell Entrance A (avg)	Bell Bottom B (avg)	Bell Length C (min)	Weight (lbs)
½	3.0	0.852	0.836	0.652	0.049
¾	3.25	1.064	1.046	0.719	0.068
1	3.25	1.330	1.310	0.875	0.101
1 ¼	4.5	1.677	1.655	0.938	0.190
1 ½	5.0	1.918	1.894	1.062	0.253
2	6.0	2.393	2.369	1.125	0.397
2 ½	6.0	2.890	2.868	1.469	0.631
3	8.5	3.515	3.492	1.594	1.277
3 ½	7.0	4.015	3.992	1.687	1.291
4	9.5	4.515	4.491	1.750	2.065
5	10.5	5.593	5.553	1.937	3.137
6	12.5	6.658	6.614	2.125	4.887

### Advantages & Highlights of DSDB Couplings

- Manufactured from pipe conforming to UL 651 and NEMA TC-2 *Electrical Polyvinyl Chloride (PVC) Conduit*
- Compression formed interference fit conforms to UL651 and NEMA TC-3 *Polyvinyl Chloride (PVC) Fittings for Use with Rigid PVC Conduit and Tubing*
- Raceway Couplings are approximately 2-3 times the minimum bell length for ease of installation in the field
- Couplings are intended to be joined with a cement that is or contains a solvent for polyvinyl chloride
- Dimensions are approximate and subject to normal manufacturing tolerances
- Coupling are available upon request for the following schedules:
  - Schedule 40 sizes = ½" - 6"
  - Schedule 80 sizes = 1" - 6"
  - DB 120 = 2", 3", 4", 5", 6"
  - Schedule 40 Buff = 2"
  - Gas Sleeve = ½" - 4"
  - C-duct = 4"

All dimensions are inches and for Schedule 40 products