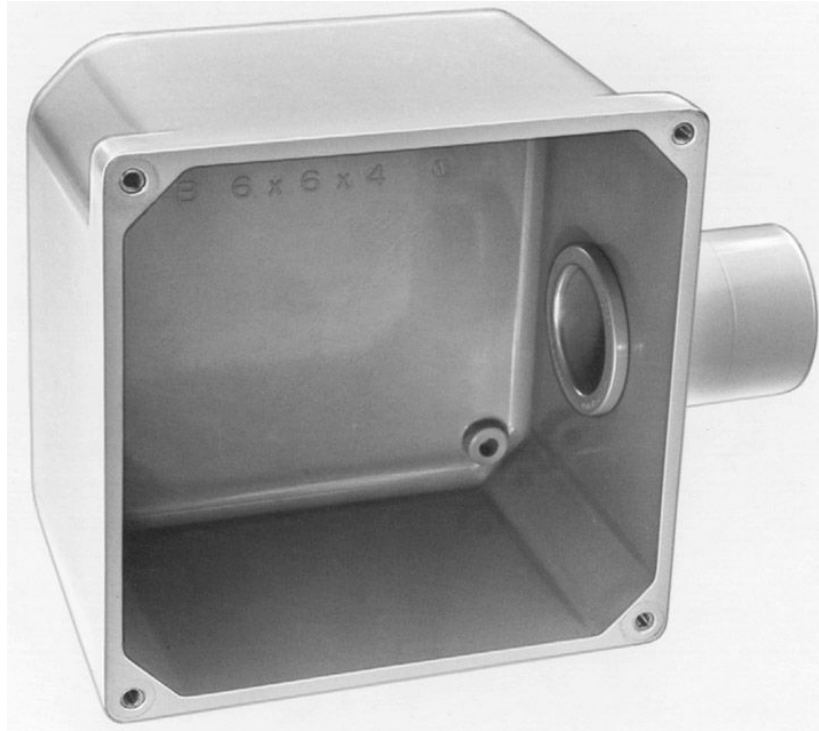


Junction Box Adapters



Size	Part Number
1/2"	05-JBA
3/4"	075-JBA
1"	01-JBA
1 1/4"	125-JBA
1 1/2"	150-JBA
2"	02-JBA
2 1/2"	250-JBA
3"	03-JBA
3 1/2"	350-JBA
4"	04-JBA